



John Islip Street, Westminster
London SW1P

GARTONJONES.COM



John Islip Street, Westminster
London, SW1P

GARTON JONES.COM

49 Marsham Street Lettings:
London +44 (0) 20 7340 0480
SW1P 3DP westminster@gartonjones.com
www.gartonjones.com

£825 Per Week

A beautifully presented 1 double bedroom apartment to rent of approx. 587 Sq.Ft (54.5 Sq.M) located on the 6th floor (with lift) of this luxury modern development moments from the River Thames, Houses of Parliament and the Tate Gallery. The accommodation comprises of an open plan reception room with a smart integrated kitchen, a large utility cupboard, fitted wardrobes to the bedroom, a luxury bathroom suite and good storage throughout. Residents of Abell House benefit from on-site amenities including a 24-hour concierge service, health spa with swimming pool, fitness centre and beautifully landscaped gardens. The local transport links of Victoria Station is nearby providing mainline UK services including the Gatwick Express as well as the underground services of Victoria, Pimlico, St James Park and Westminster. The area has an abundance of amenities in the immediate area and following on from the extensive regeneration of Victoria street a selection of many new restaurants to compliment existing. Distinguished hotels like The Wellington, The Goring, St Ermins', The Westminster (with STK onsite) are all within very close proximity. There is easy access to universities such as Chelsea College of Arts, LSE and King's College. Garton Jones manage this property are located just a few minutes from the property
** Please note that Tenants are liable for separate heating and cooling costs billed via Switch 2 **

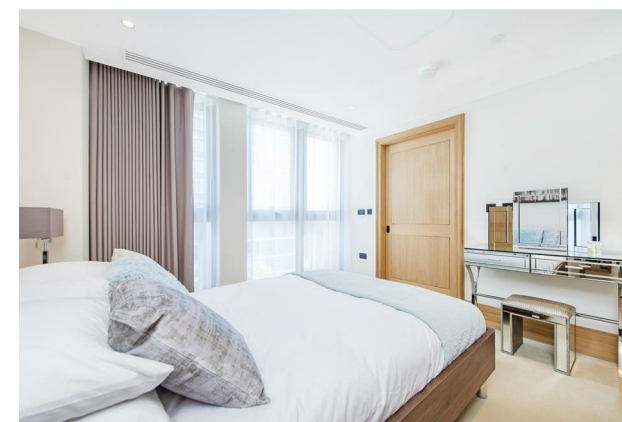
Deposit 5 weeks

Minimum Term 12 Months

Council Tax Band G (London Borough of Westminster)

EPC Rating B (85)

- Beautifully Presented 1 Bedroom
- 587 Sq.Ft (54.5 Sq.M)
- 6th Floor (Lift)
- Open Plan Reception Room & Smart Integrated Kitchen
- Luxury Bathroom Suite
- Available: 10th October 2025
- 24 Hour Concierge With Residents Health Spa With Gym & Swimming Pool
- Walking Distance to Westminster & St James' Park Transport Links
- Close to Local Shops & Restaurants



Abell House

Approximate Gross Internal Area = 587 sq ft / 54.5 sq m



Sixth Floor

